



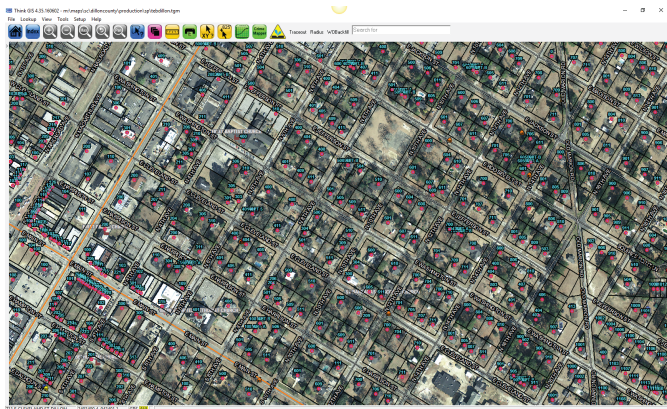
# Let WTH help you prepare for Next Gen 911

*Successful call routing in Next Generation 911 will rely on the accuracy of your GIS data and it's compliance with applicable standards.*

## How ready is your data for Next Generation 911?

Several states and regions have implemented GIS data standards in preparation for the roll out of NG911. The accuracy and standardization of GIS data is critical for the successful implementation of Next Generation 911.

The GIS experts at WTH are here to guide you through the preparation of your data for NG 911.



## Comprehensive Data Analysis

WTH has developed processes that allow us to quickly, accurately and affordably compare GIS data and 911 databases to identify data discrepancies and quality issues.

- ALI Database to GIS Addresses
- MSAG to GIS Street Centerlines
- ALI Database to MSAG

## Data Management Services

NG911 GIS data can be complex to create and maintain. WTH will manage your NG911 specific layers with our affordable NG911 data management service plan. Our dedicated staff can do the work quickly and affordably.

- NG911 GIS Centerline Creation & Updates
- NG911 GIS Address Point Creation & Updates
- NG911 ESZ Boundary Layer Creation & Updates
- NG911 Provisioning Boundary Layer Creation
- Regular GIS Data Quality Comparisons
- State Agency Submissions and Quality Management



## WTH Technology, Inc.

3665 Washington Blvd. • Indianapolis, IN • 46205

**1-888-Call WTH** [www.wthgis.com](http://www.wthgis.com)