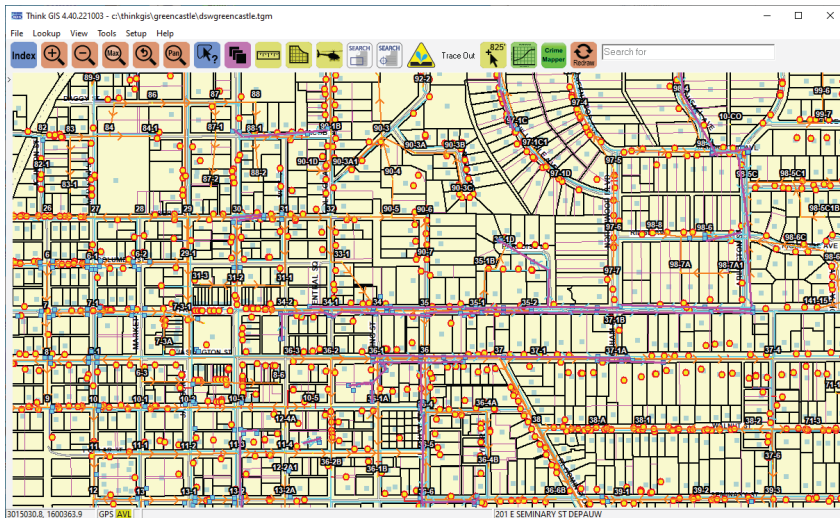


Using Think GIS® for LCRR and Lead Service Line Reporting



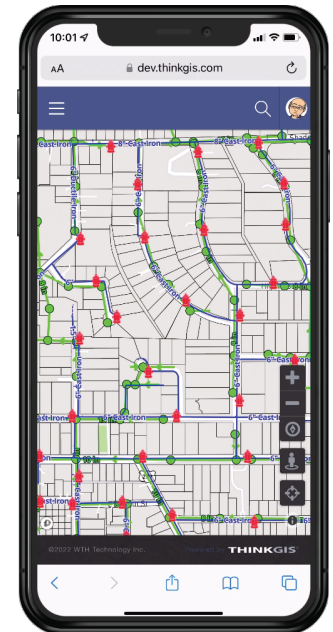
- Create a digital inventory of service line locations and materials
- Identify system and customer owned portions of service lines
- Use existing GIS data to identify property ownership for service line records
- Use publicly accessible maps to satisfy consumer notification requirements
- Use GIS maps to track LSL replacements
- Include GIS maps in required reporting to the State.

EASY TO USE MOBILE GIS INVENTORY TOOLS



LEAD SERVICE LINE TRACKING

- Update Existing Records
- Note Newly Found Service Lines
- Note Inspection Dates
- Record Materials
- Include Ownership Info
- Add Photos



SAVE TIME AND MONEY WITH THINK GIS®

- Correct utility discrepancies quickly, accurately and permanently - a change made in GIS is there forever
- Capture critical personal knowledge from superintendents & employees BEFORE they leave or retire
- Properly and accurately identify types and depths of pipes including precise GPS coordinates
- Eliminate wasted time sorting through stacks of paper maps for repairs and projects
- Present information to stakeholders clearly and effectively to identify and validate system operations

Join the more than 150 Utilities already using Think GIS®

Scan me!



WTH Technology, Inc.

3665 Washington Blvd. • Indianapolis, IN • 46205

1-888-Call WTH www.wthgis.com

Listen to people just like you describe their experiences with WTH and Think GIS®

In business since 1967, serving local government and private sector utility customers with high quality, user friendly GIS solutions since 1994.